

RECEIVED BY:
 Yorkshire Dales National Park Authority
 12 MAY 2011

GRASSINGTON

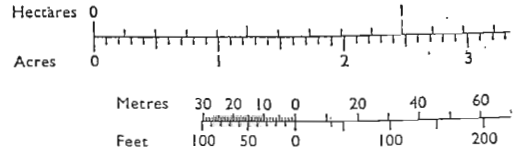
location plan

scale 1 / 2500

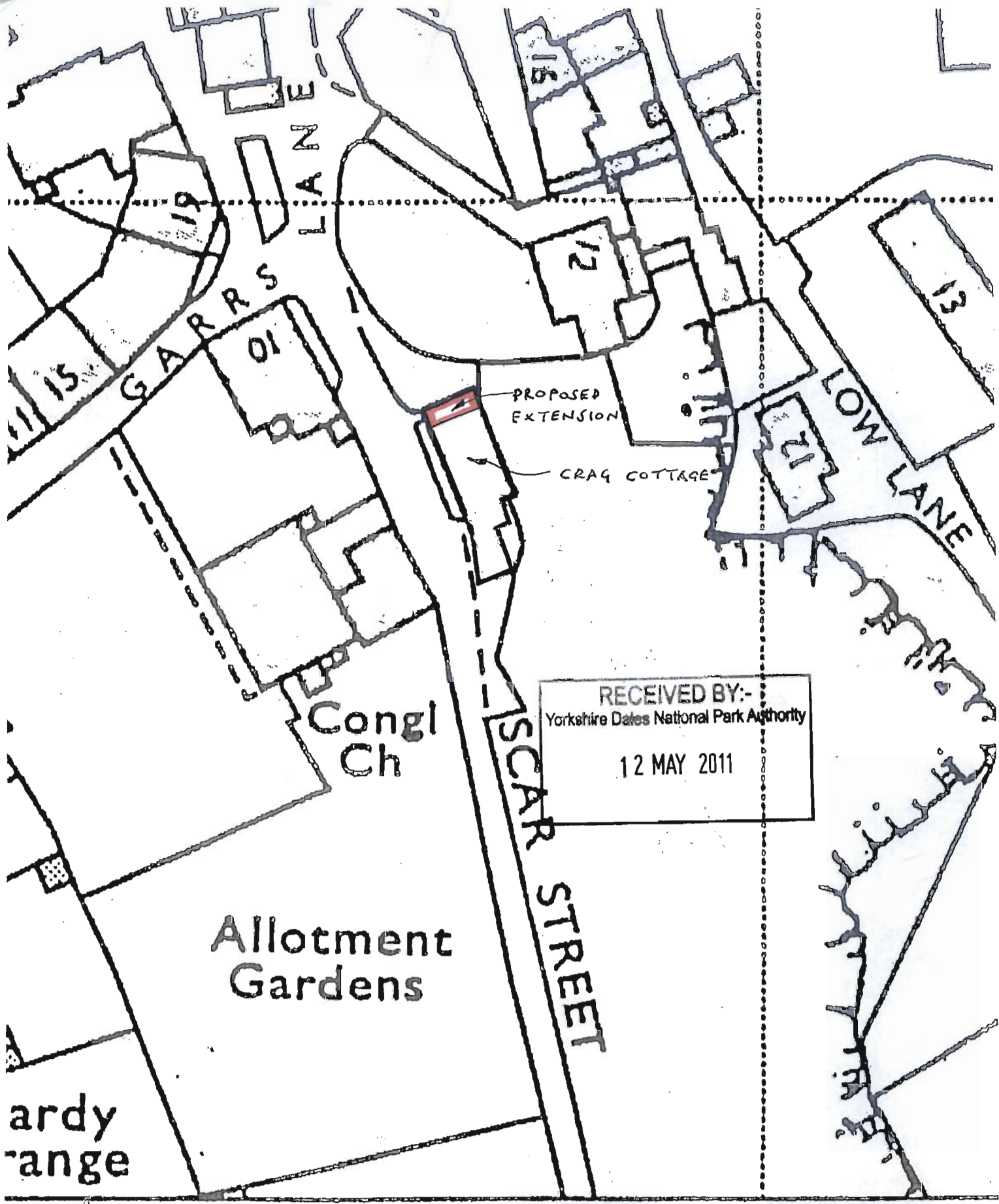
ished by the Director General of the Ordnance Survey, Southampton.

COMPILATION DATA

Levelled 1954
 Boundaries Mar 1974



ABBR



RECEIVED BY:-
Yorkshire Dales National Park Authority
12 MAY 2011

004

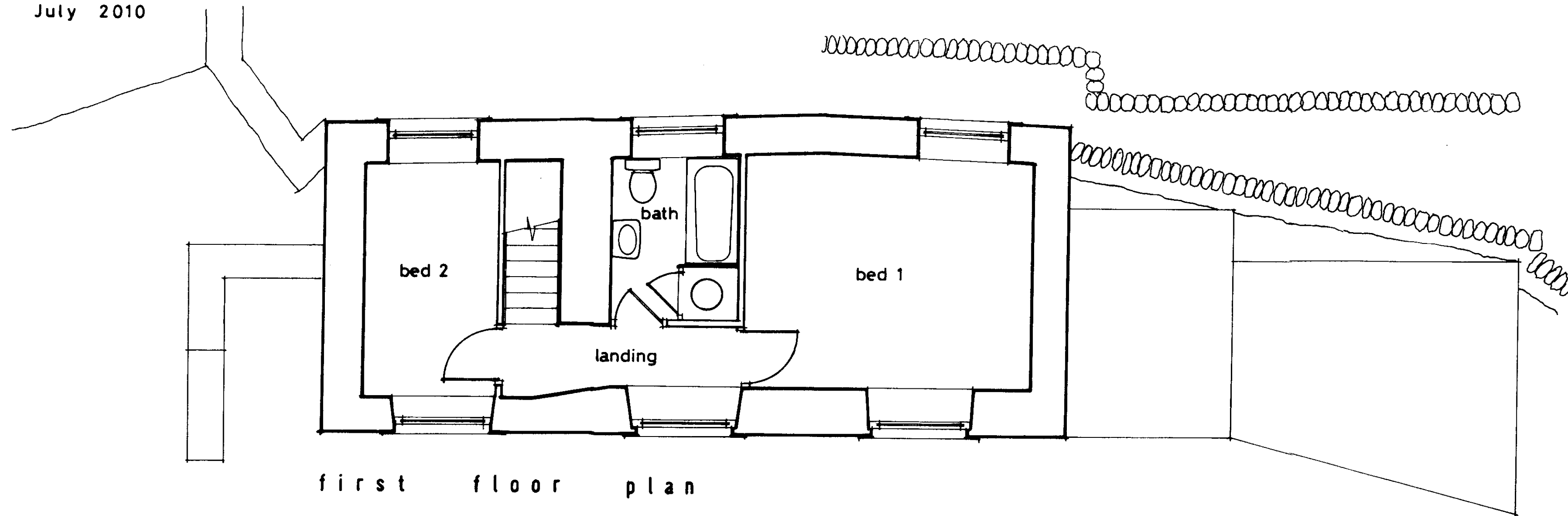
site plan

scale 1/500

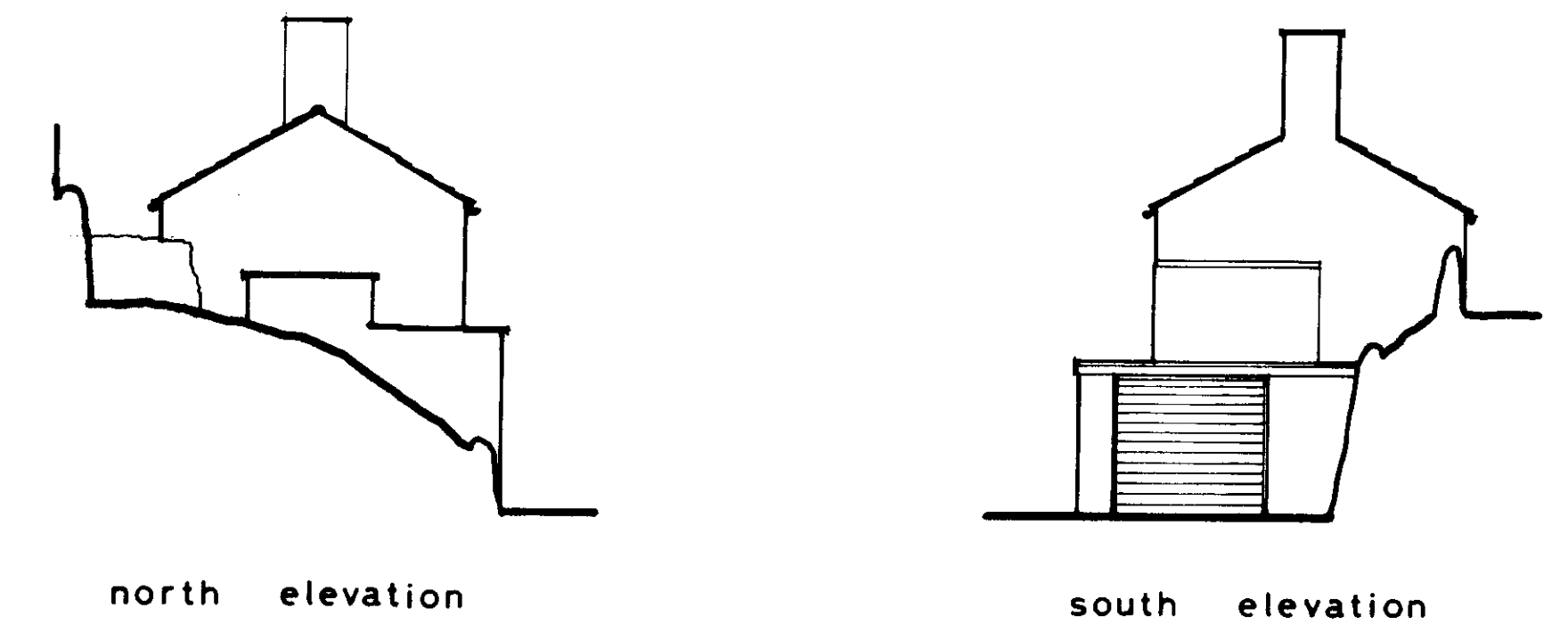
plans and elevations
as existing
at
Crag Cottage
Scar Street
Grassington

RECEIVED BY:-
Yorkshire Dales National Park Authority
12 MAY 2011

scales 1/50 and 1/100
July 2010

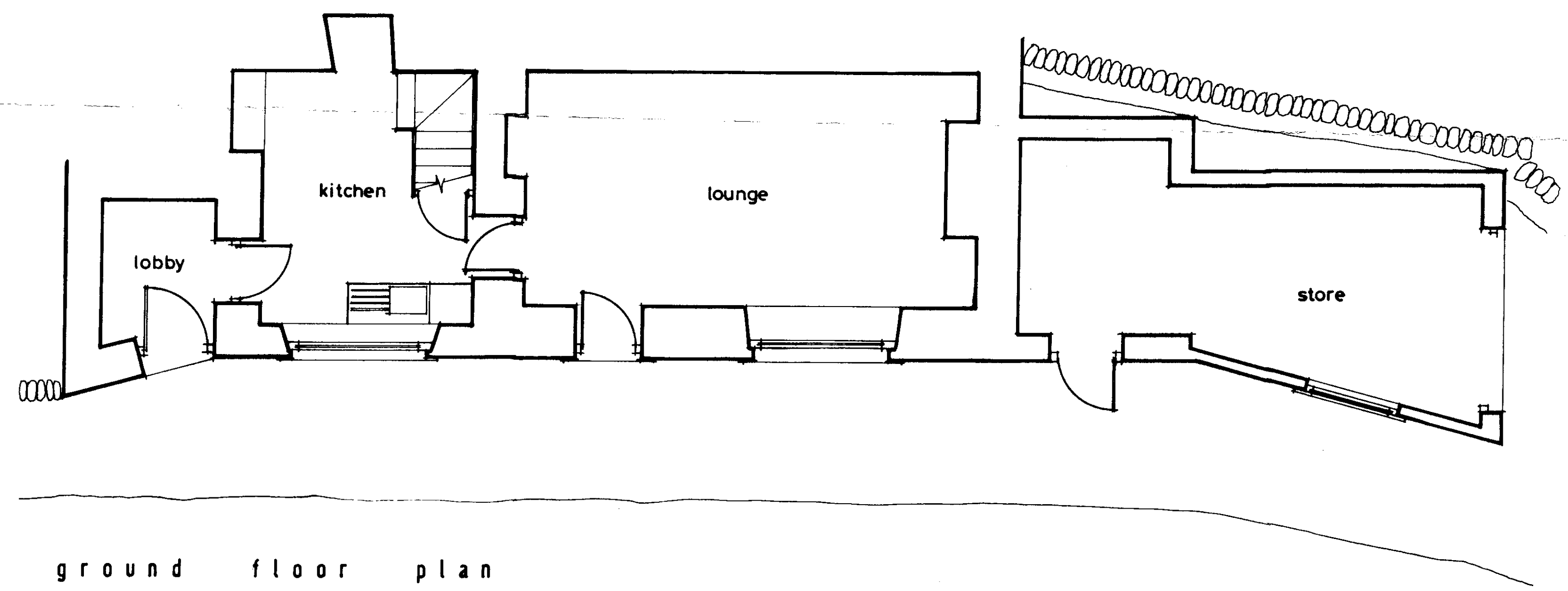


first floor plan

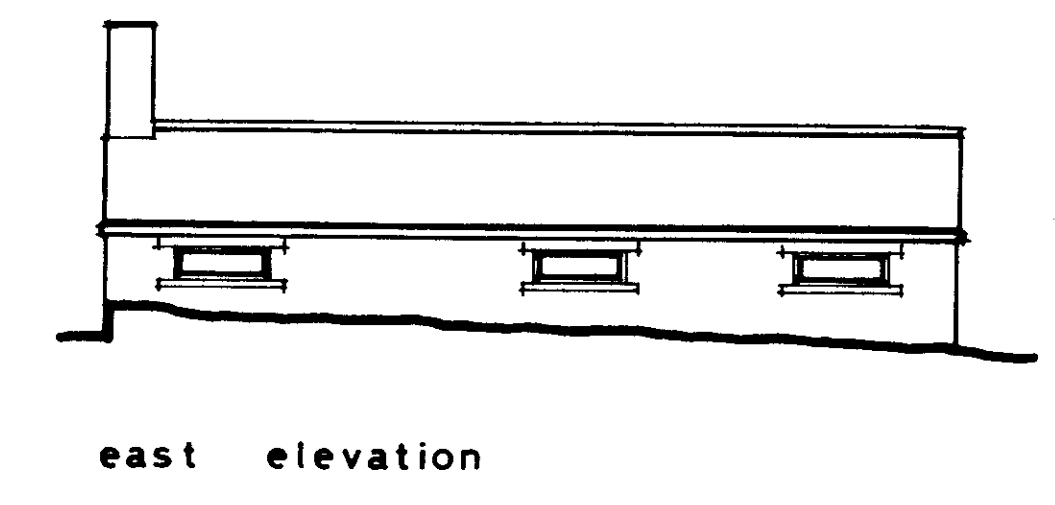


north elevation

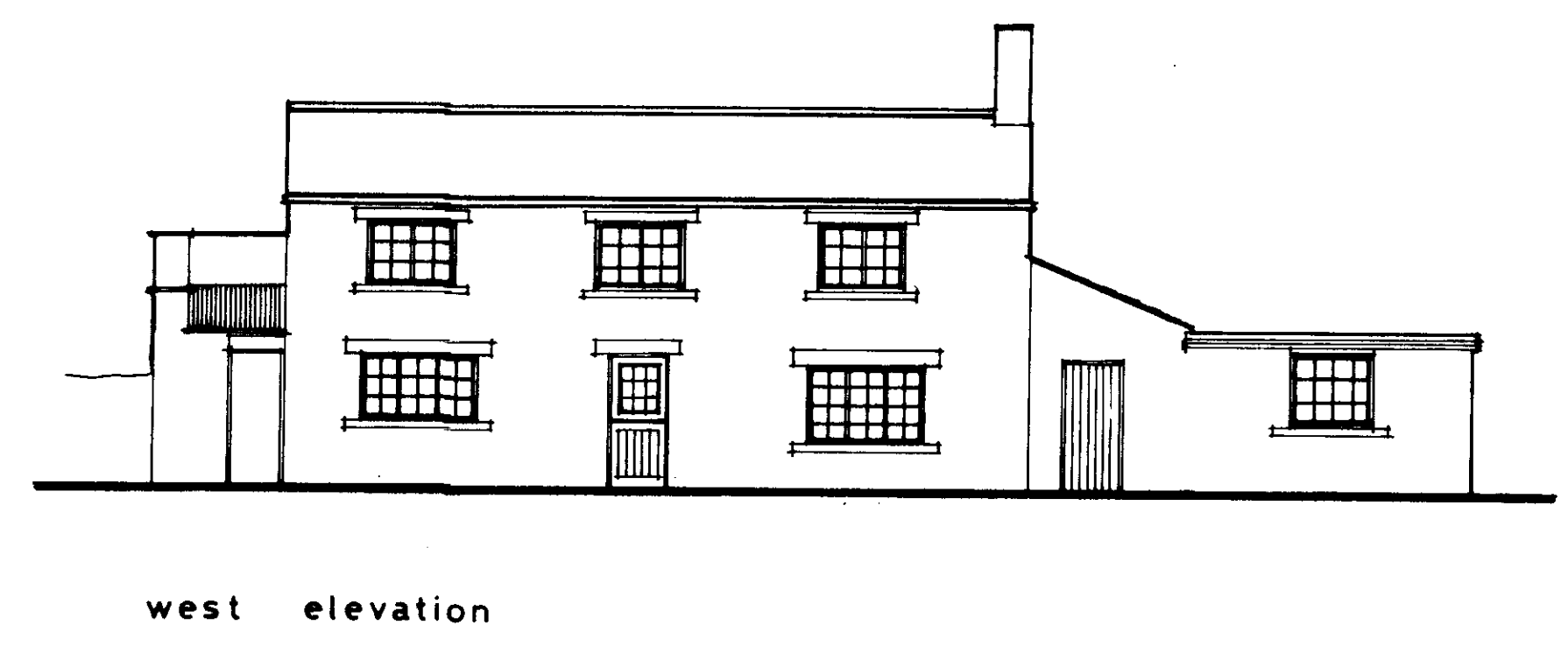
south elevation



ground floor plan



east elevation



west elevation

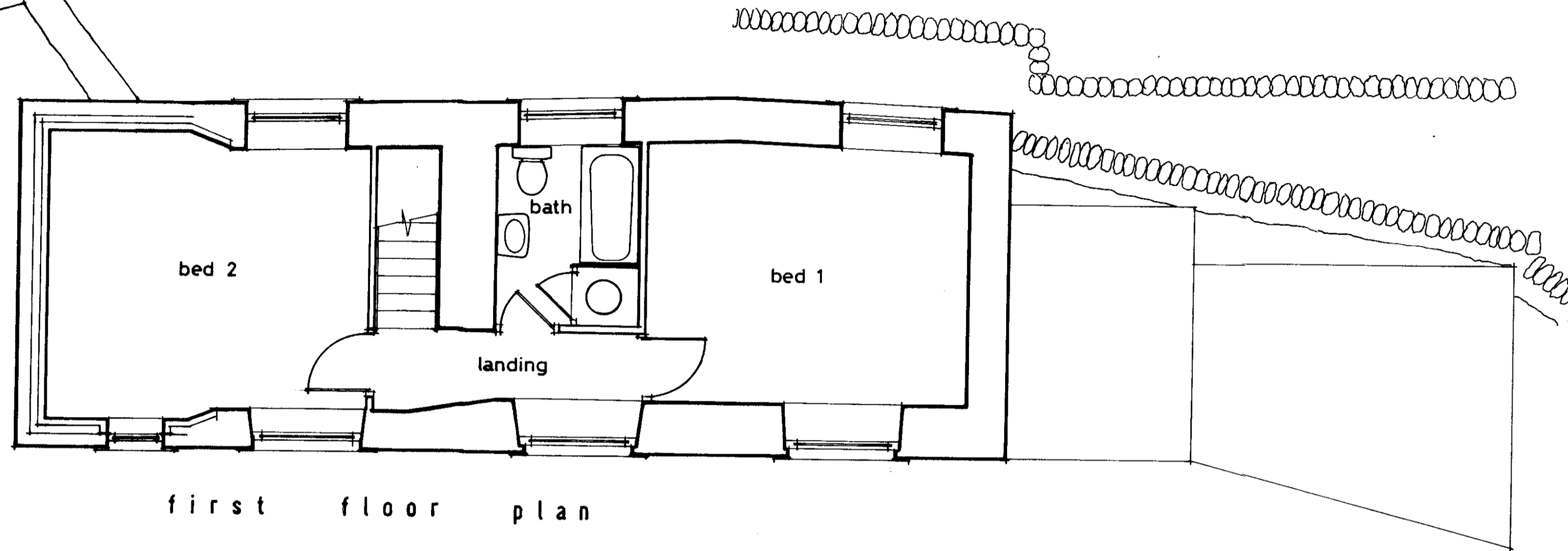
plans and elevations
as proposed
at
Crag Cottage
Scar Street
Grassington

scales 1/50 and 1/100
May 2011

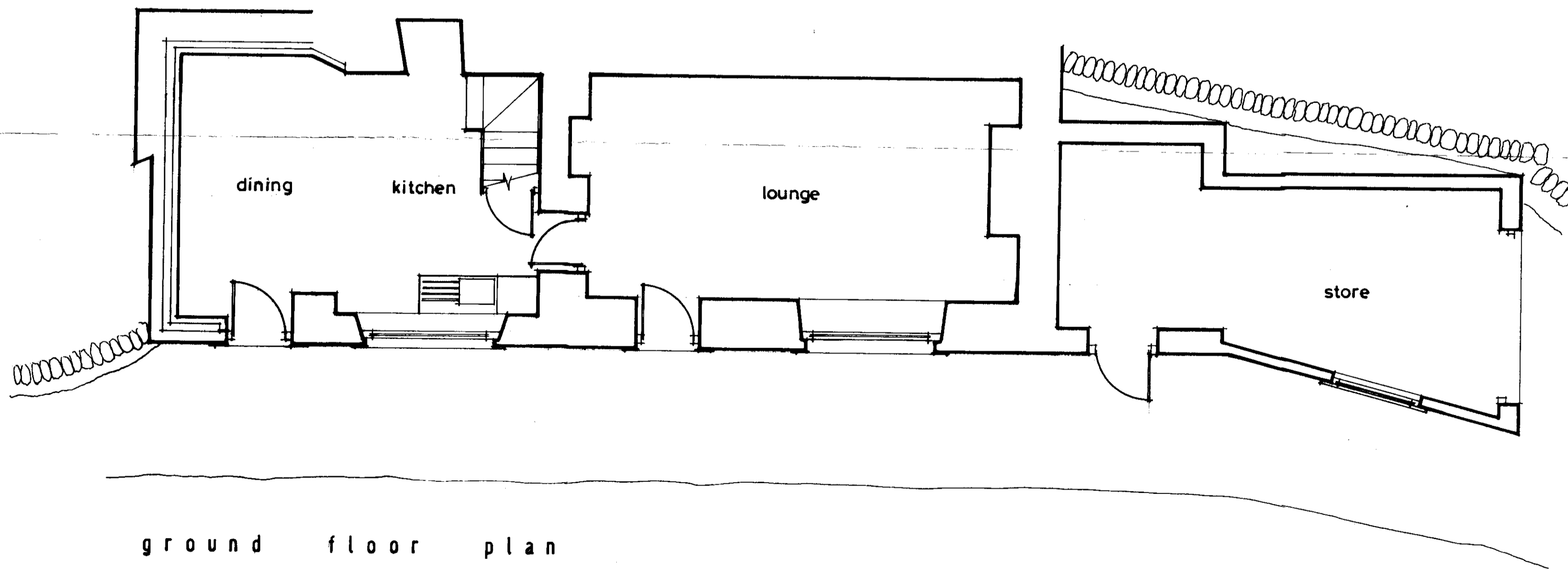
RECEIVED BY:-
Yorkshire Dales National Park Authority
12 MAY 2011

external finishes

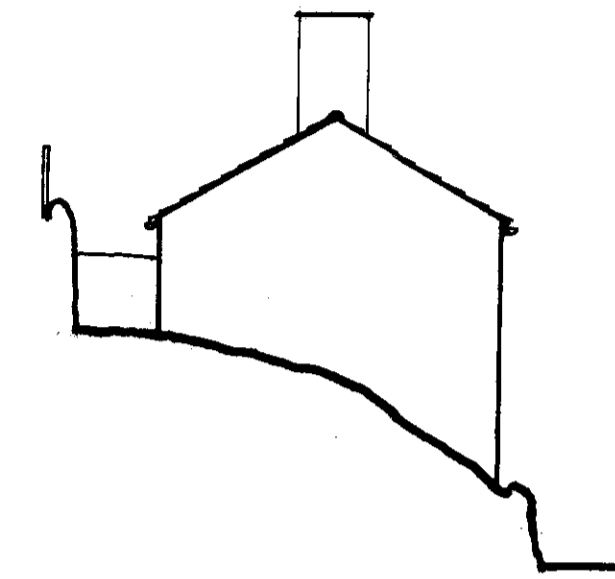
- ROOF - NATURAL STONE SLATES.
- WALLS - RANDOM SANDSTONE / GRITSTONE WITH LARGE QUORN STONES TO CORNER
- DOOR / WINDOW - TO MATCH EXISTING
- RAINWATER GOODS - TO MATCH EXISTING.



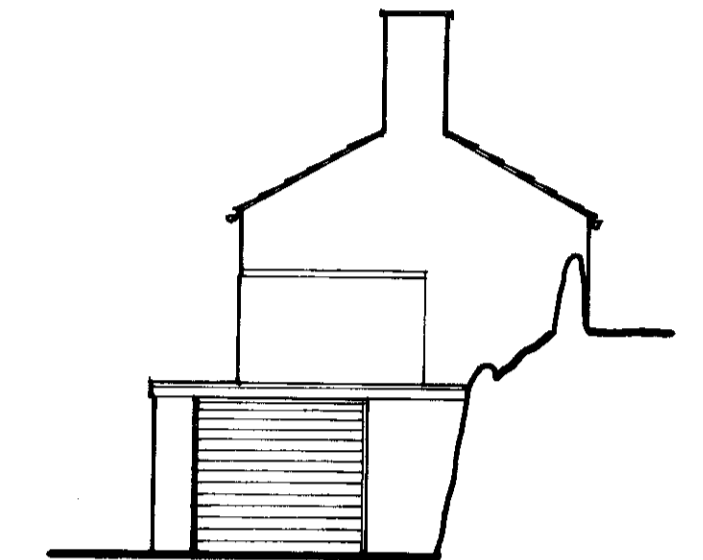
first floor plan



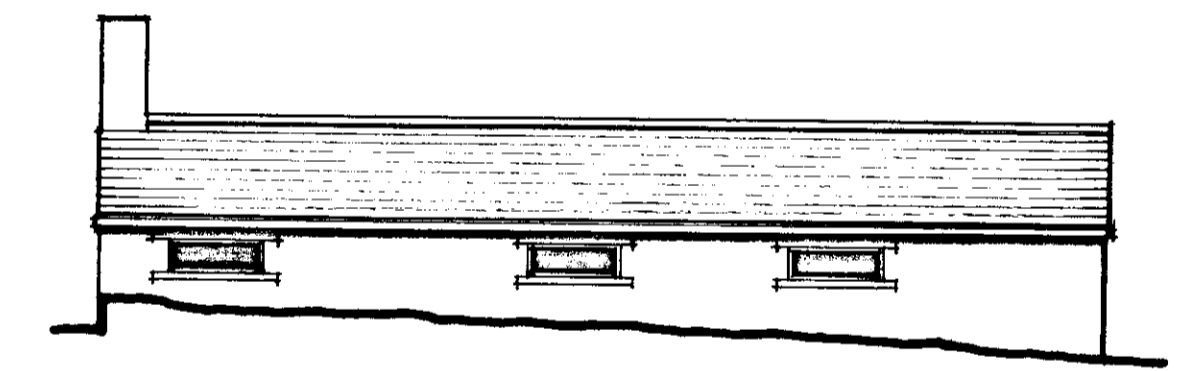
ground floor plan



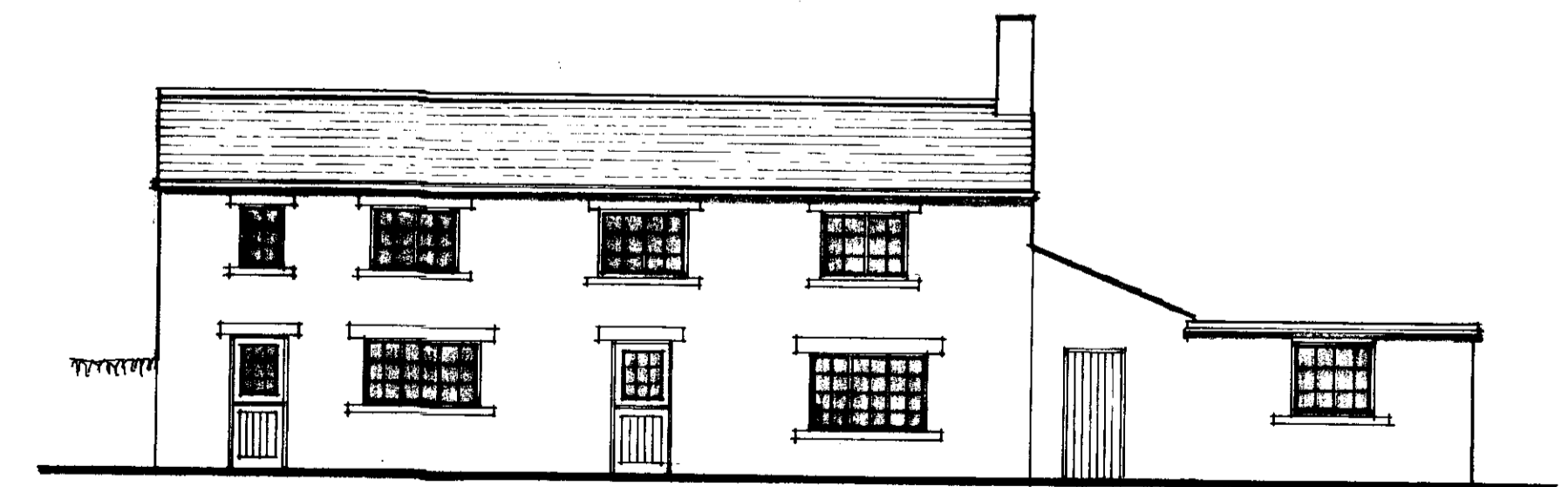
north elevation



south elevation



east elevation



west elevation